



Shanghai Star House Co., Ltd.

Add: No. 2303, Xuanhuang Highway, Huinan Town, Pudong New Area,
Shanghai 201300

Tel: +86-21-68043173

Fax: +86-21-68043192

E-mail: info@starhouse.com.cn

www.starhouse.com.cn

www.starhousecn.com

PROFESSIONAL MODULAR HOUSING MANUFACTURER

MAKE YOUR LIFE MODULAR



Company Profile

Shanghai Star House CO., LTD, manufacture and installs durable and cost-efficient containers including flat pack cabins and modified container houses. Our factories Owing an area of 35,350 Sq M, 250 employees. Production capacity: 600 units/month.

For around 10 years the Star House brand has been at the forefront of delivering specialised modular building projects throughout Asia, Africa, Europe, North America, South America and have recently added Australia/Canada as a key market.

Offering a diverse range of transportable buildings, our comprehensive range of modular accommodation units are custom designed to be delivered anywhere in the world. All of our buildings are designed and manufactured to all different standards and are compliant with the Building Codes of all over the world. Each building delivers a high level of environmental efficiency with recycle green environmental materials.

Committed to world's best practice principles, Shanghai Star House operates in accordance with the National Code of Practice for the Construction Industry (the Code) which outlines minimum standards companies must meet. We take this obligation very seriously, ensuring that all industrial instruments and workplace practices are consistent with the Code's requirements. Our business model focuses on manufacturing in China with local building quality. For all projects, we will have our own teams based in Shanghai to manage and ensure quality of workmanship. The team will be overseeing manufacturing in China from commencement to completion.

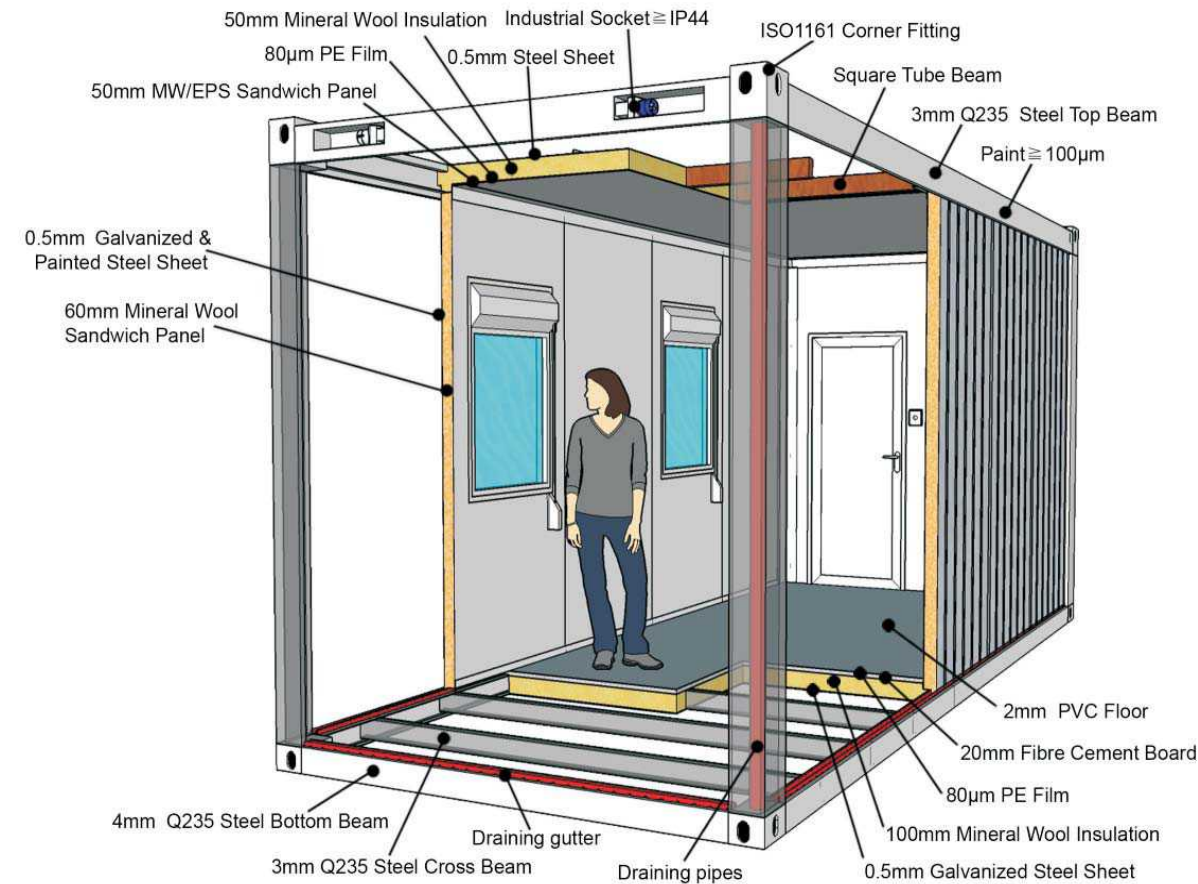
Star House' global network team will ensure that your project is fast tracked right from the conceptual design stage through to the final delivery.



Star House manufactures, designs and installs the most durable and cost-efficient modular buildings, offices and cleanrooms in the world. We have become one of the fastest growing companies in China. Star House has established itself as the premier company of choice in our industry. We are proud to offer an unparalleled product line. Our selection of offices, living houses, workforce camps, smoking shelters, guardhouses, machine enclosures and cleanrooms offers our clients options without equal. With our superior products, fast quotations, on-time deliveries and factory trained installers, we can meet the needs and exceed the expectations of different customers.

Providing complete turnkey solutions worldwide, our sales team assists you in evaluating and resolving your individual needs and our staff of architects and engineers takes your plan from the design stage to its completion including all local permitting requirements. Offering a diverse range of transportable buildings, our comprehensive range of modular accommodation units are custom designed to be delivered anywhere in the world. Manufactured in our state-of-the-art facility with the utmost quality control and installed by our factory trained professional installers we complete your project on time and with guaranteed satisfaction.

Flat Pack Container

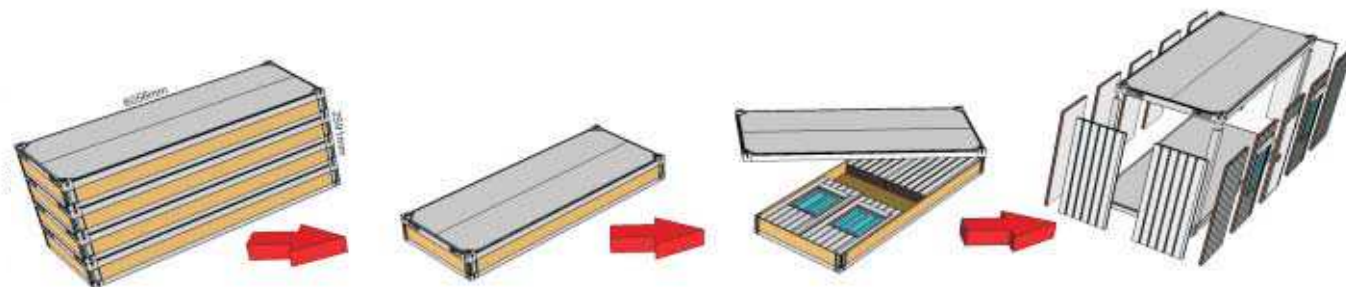


20ft standard specification

The versatile standard flat-packed unit is suitable for international transport. Its dimension is of an appropriate size to make transit by road, air or sea easy to manage. Lifting, by crane is made simple by the recessed lifting eyes at each corner.

The flat-packed unit is designed as a lightweight construction consisting of floor and roof frames with corner profiles. The construction enables more than one flat-packed unit to be connected to another, thereby allowing a larger internal open space. The units may also be stacked when erected, to form a two or three storey building, accessible by an external/inner stair.

The units will be delivered by flat-packed (in packed bundle approx. 648mm high). To prevent movement during transit, a steel non-slip is placed between each ISO corner. The construction of the packed bundle is solid enough to enable transport and handling by fork lift. To avoid hook damage during lifting, a corner protecting plate is placed each corner in top flat-packed unit. Material shipped inside the bundle is packed so as to ensure complete immobility during transit. The assembled flat-packed units are solid enough to enable transport and handling by any ISO means (crane, forklift, container truck etc.)



Size & Advantages



Name	External Dimensions			Internal Dimensions			Weight
	Length	Width	Height	Length	Width	Height	
20'x8' standard unit	6058mm	2438mm	2791mm	5858mm	2238mm	2520mm	2000 kgs
8'x8' Mini corridor unit	2438mm	2438mm	2791mm	2238mm	2238mm	2520mm	1150 kgs
10'x8' short unit	3025mm	2438mm	2791mm	2825mm	2238mm	2520mm	1350 kgs
16'x8' corridor unit	4888mm	2438mm	2791mm	4688mm	2238mm	2520mm	2050 kgs
24'x8' extra unit	7200mm	2438mm	2791mm	7000mm	2238mm	2520mm	2500 kgs
30'x8' Over length unit	9000mm	2438mm	2791mm	8800mm	2238mm	2520mm	2770 kgs
20'x10' Over wide unit	6058mm	3000mm	2791mm	5858mm	2800mm	2520mm	2600 kgs

Also available with external height of 2591mm (8'6") / 2896mm (9'6"), Max height: 3000mm, Packing Height: 648/864mm



Easy Transportation

Star House cabin structure when flat packed for transportation is designed in accordance with a standard ISO shipping container. Each flat packed unit includes ISO standard forklift pockets within the floor base.



Fast Construction

Four skilled workers can finish assembling three standard unit within 8 hours; Up to 40% time saving on construction over traditional building techniques due to all structural elements being prefabricated.



Flexible Combination

Multiple modular building can be easily created by stacking and interlinking units together. Internal wall panels can be removed and changed at the clients' discretion to provide flexible layout options.



Cost Saving

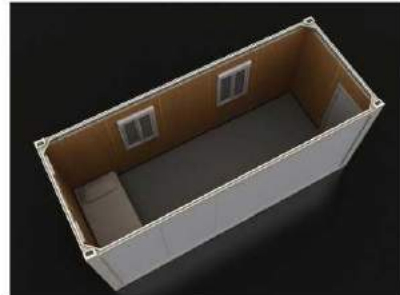
3-6 units can be packed in one bundle; up to 75% transportation cost can be saved compared with Traditional Architecture or modified containers.



Green & Sustainable

The steel structure of cabin can be recycled. Our manufacturing facilities are energy efficient with strict governance on wastage of materials and water supply.

20ft Flat Pack Standard Units



SH101

The basic flat pack unit. Suitable for offices, bedrooms, change rooms, and site accommodation houses etc.



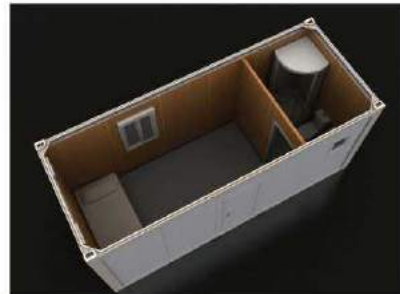
SH104

Two separate rooms can be used as dormitories or offices etc.



SH111

Two rooms with bath and toilet. Suitable for office or accommodation.



SH114

VIP unit. Site office, accommodation or holiday cabin including private shower and toilet.



SH115

Office or accommodation includes private bath and toilet.



SH114 A

Two single rooms with public bath 2 basins for each rooms.



SH101 Shower Unit

6 showers, 6 washbasins and water heater is also available.



SH101 Toilet Unit

6 toilets, 6 washbasins.



SH101 Ablution Unit

3 showers, 3 toilets, 4 washbasins and 2 urinals.



SH114+SH104



SH114+SH101+SH104



SH114+2xSH101+SH104

Accessories

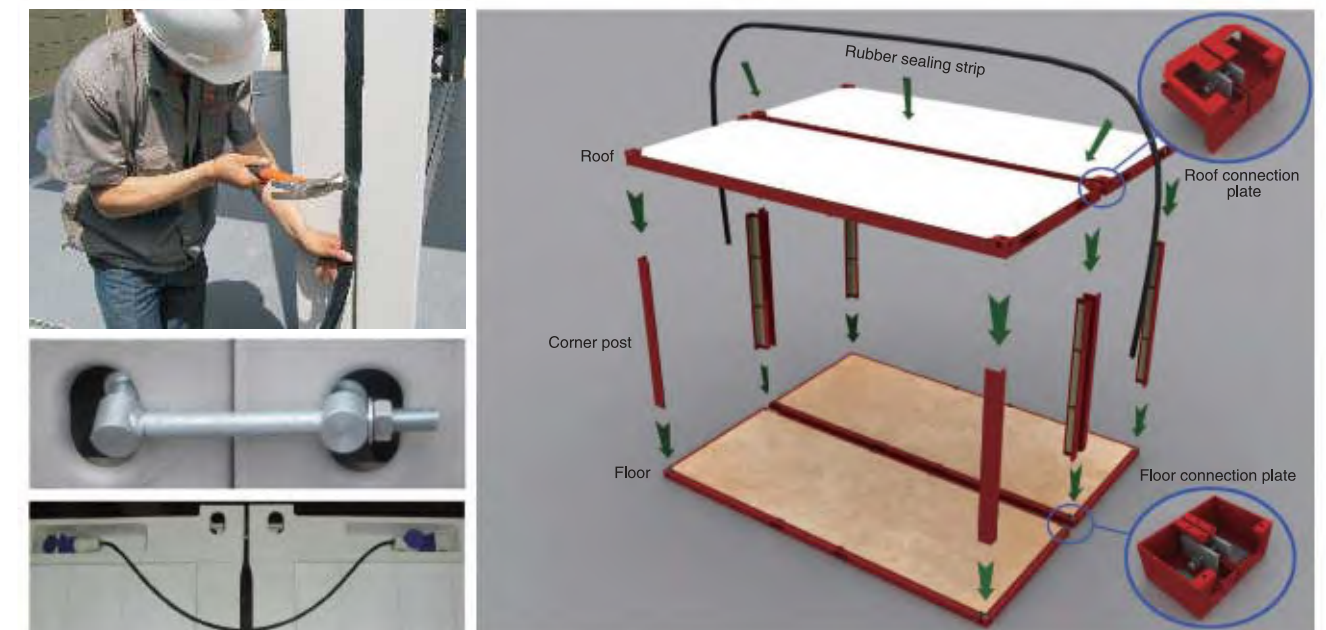


Wall Panels can be removed and changed to provide flexible layout options.



Installation accessories and connection devices

Single unit can be linked together to large structures at ease through our linking kit.



A Wide Range of Products

Mining Camps

From small labor camps to real cities, with dormitories, dining, recreation, baths, gym, etc., with or without equipment.



Office & Classroom

From individual offices to large complex corporate companies, can be equipped the offices with various functions.



Hotel

luxury buildings with excellent finishes, private bathrooms, kitchens, dining rooms, air conditioning and other accessories.



Snack & Cafe

Mobile shop or a small restaurant, can be arbitrarily replacing the external decorations and internal facilities.



Out Building

Our products can also do special extensions: technical equipment room, solar power house, control room on board and gym etc.



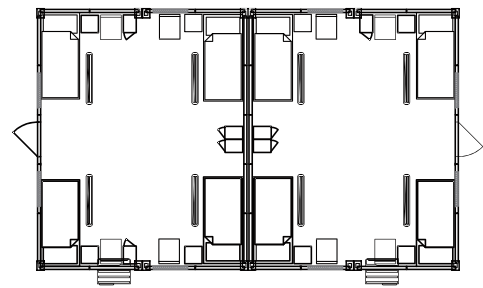
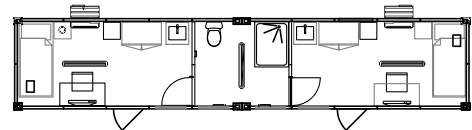
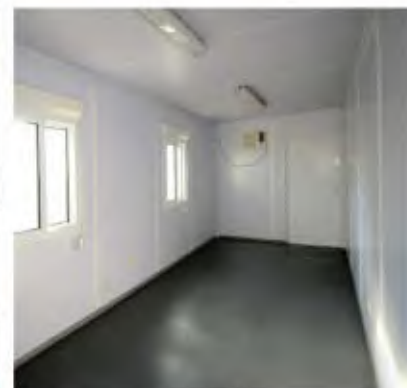
Toilet & Shower

Permanent or temporary toilets and showers can be used for exhibitions, disaster area or the resorts.



Project & Layout

Workforce Camp
Total Area
5000 sq. m.



Location
Africa Kenya



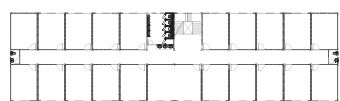
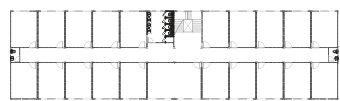
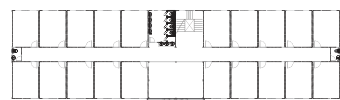
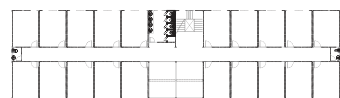
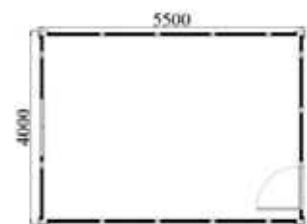
Games Venues
Cabins & Toilets
Total Area
4500 sq. m.



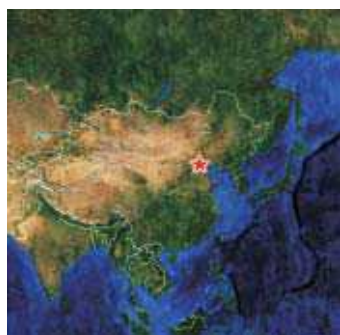
Location
Asia Azerbaijan



**Accommodation
& Offices
Total Area
4608 sq. m.**



**Location
Beijing, China**



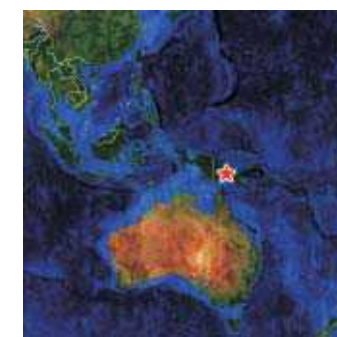
**Company Offices
Total Area
1500 sq. m.**

**Location
Russia**



**Staff House
On Barge
Total Area
900 sq. m.**

**Location
Oceania
Papua New Guinea**





S. America

- Chile
- Columbia
- Peru
- Brazil
- Costa Rica
- Dominica
- Trinidad and Tobago
- Panama
- Haiti
- Argentina
- Suriname
- Uruguay
- Venezuela

Africa

- Angola
- Congo
- Equatorial Guinea
- Egypt
- Gabon
- Ghana
- Guinea
- Mauritania
- Mozambique
- Namibia
- The Somalia Democratic Republic
- Nigeria
- Reunion
- Sierra leone
- Uganda
- South Africa
- Sudan
- Tanzania
- Kenya
- Mali

Asia

- Japan
- Azerbaijan
- India
- Korea
- Laos
- Mongolia
- Malaysia
- Pakistan
- Philippines
- Singapore
- Thailand

Middle East

- UAE
- Oman
- Qatar
- Afghanistan
- Iraq

EUROPE

- Russia
- Armenia
- Bulgaria
- France
- Germany
- Denmark
- Norway
- Poland
- Spain
- Sweden
- UK

North America

- Canada
- USA

Central America

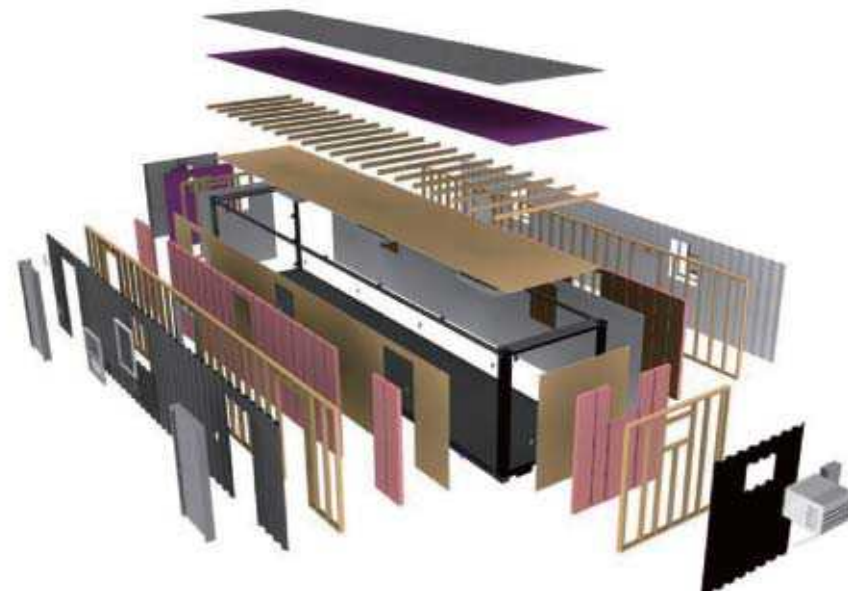
- Guadeloupe(France)

Pacific area

- Australia
- New ZeaLand
- New caledonia
- Papua New Guinea
- Solomon
- East Timor

We have designed and produced the most excellent modular housing in purpose to improve the living condition.

Modified Container House



Type	External Dimensions			Internal Dimensions		
	Length	Width	Height	Length	Width	Height
20' GP Modified unit	20' 6058mm	8' 2438mm	8'6" 2591mm	5898mm	2287mm	2302mm
20' HC Modified unit	20' 6058mm	8' 2438mm	9'6" 2896mm	5898mm	2287mm	2700mm
40' GP Modified unit	40' 12192mm	8' 2438mm	8'6" 2591mm	12031mm	2352mm	2302mm
40' HC Modified unit	40' 12192mm	8' 2438mm	9'6" 2896mm	12031mm	2352mm	2700mm
40' OH.W Modified unit	40' 12192mm	12' 3658mm	9'6" 2896mm	12031mm	3572mm	2700mm
45' HC Modified unit	45' 13716mm	8' 2438mm	9'6" 2896mm	13555mm	2352mm	2700mm

Max long: 18000mm; Max wide: 4200mm. The size all can also be customization.

Container conversions can be made for use as stores, workshops & offices, accommodations, lunchrooms, bathroom, Shower-rooms and so on.

Till now, we have made various kinds of modified container houses for more than 2, 500 sets, Our typical customers list covers Canada, Europe, Australia, Middle-east and Asia.

High-lights of our Star House containers:

1. It is easy to transport and load these ISO Modified Containers because of the containers' strength and durability.
2. We also manufacture the modified container at your request from various kinds of shipping containers, or from the raw material to build a new one.
3. For the in-house modification, floor / wall / roof can all be modified to achieve the high quality of good force resistance, heat insulation, sound insulation, moisture resistance; tidy appearance, and convenient maintenance.
4. The containers can be completely built-up according to your requirements and also your country's or local law and codes requirements. Both water drainage system and electrical system could be well installed, ready to hook-up to your local supply system.
5. Take you almost no time to assemble it. It is easy to install the containers according to the manuals.
6. The exterior surface and interior fittings can be dealt according to your own design.
7. New containers of this construction can be linked together either side by side or end on end and they can be stacked one on another.

20ft/40ft/45ft Modified Container House



8 × 20ft Starter unit Model:MC-2001



8 × 40ft Starter unit Model:MC-4001



8 × 40ft Bachelor unit Model:MC-4002



8 × 40ft Manager unit Model:MC-4003



8 × 40ft Business unit-1 Model:MC-4004



8 × 40ft Business unit-2 Model:MC-4005



40ft Professor unit Model:MC-4006



40ft Junior unit Model:MC-4007



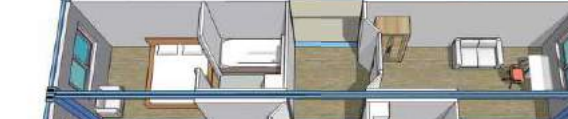
2 × 8 × 40ft Master unit-1 Model:MC-4008



2 × 8 × 40ft Master unit-2 Model:MC-4009

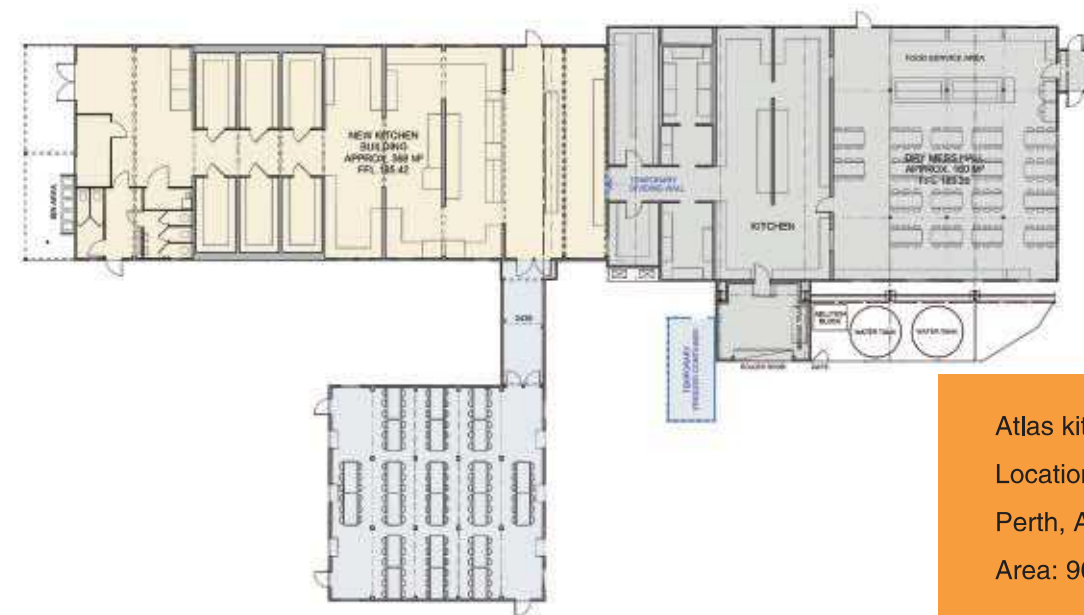


2 × 8 × 40ft Queen unit Model:MC-4010



2 × 8 × 20ft King unit Model:MC-4501

Project & Layout

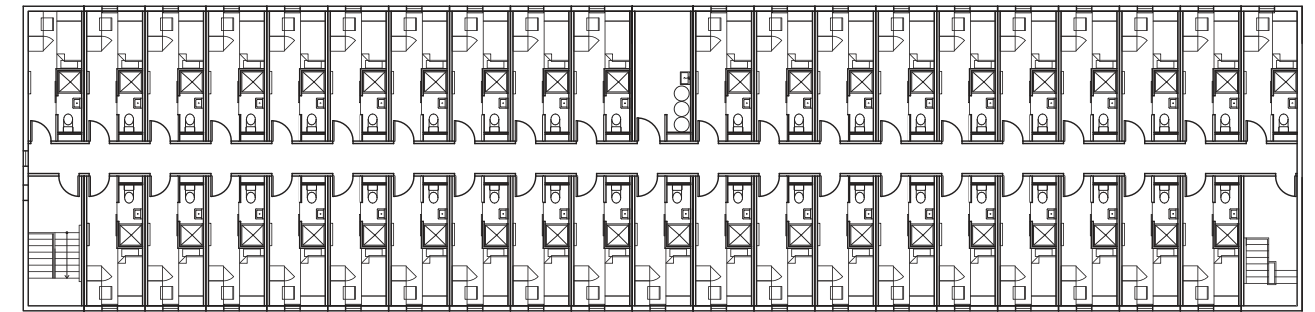


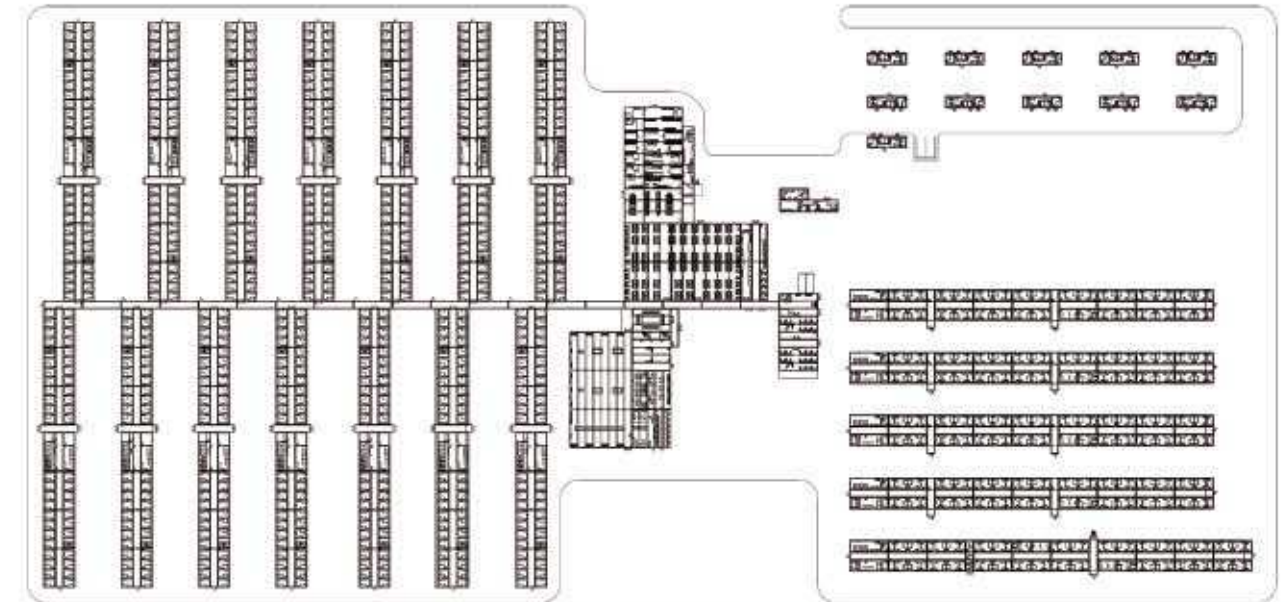
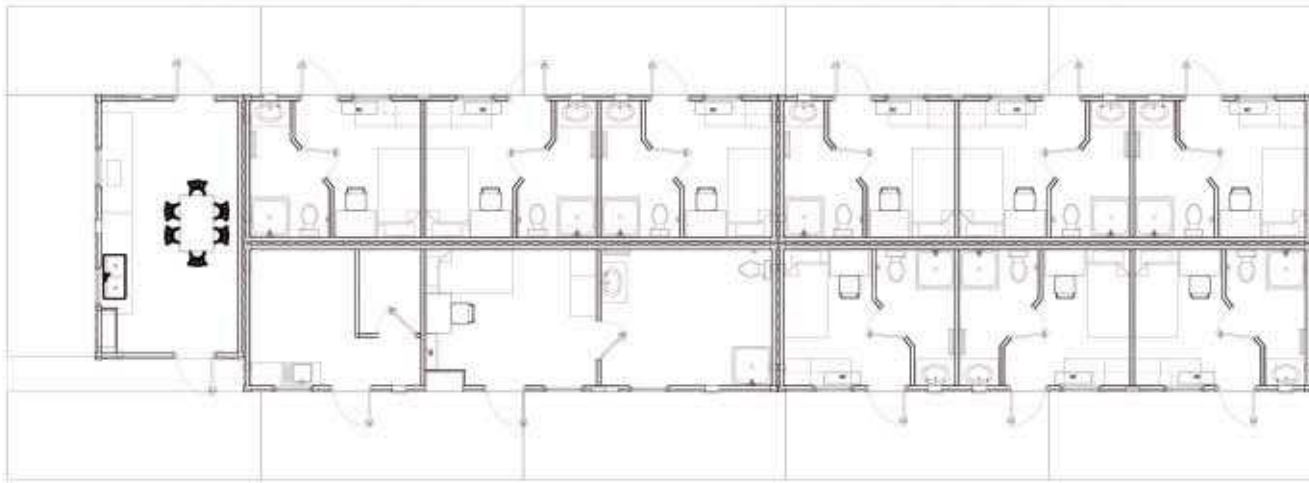
Atlas kitchen modules
Location:
Perth, Australia
Area: 900 sq.m.

Student Dormitory

Location: Montreal, Canada

Area: 3800 sq.m.





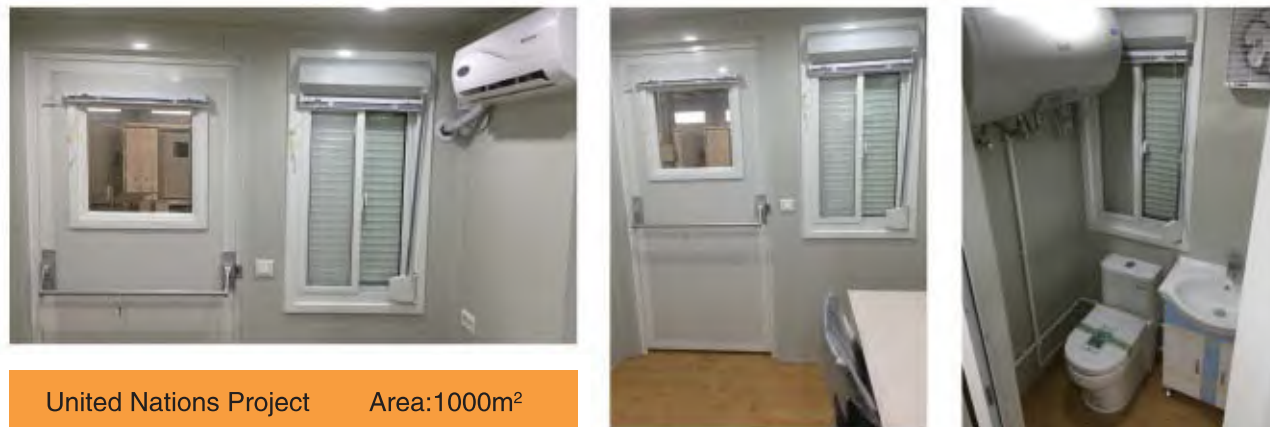
Lower Mattagami River Project—800 workers camp for Ontario Power Generation
 Location: Northern Ontario Area: 21300 sq.m. Designed to tolerate -40°C

Dormitory modules
 Location: Perth, Australia
 Area: 200 aq.m.





Certificate Display



United Nations Project Area:1000m²

